

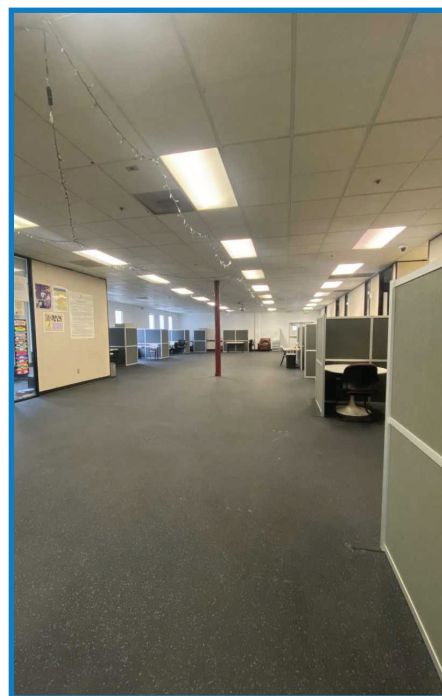


## **LSF Northern California Adult Services: Renovation Update**

**W**e are excited to announce that the renovation for our Social Dynamics Program in Northern California is complete! The center was closed for the past 3 months. Our clients were eagerly awaiting our reopening and they were pleasantly surprised! The facility looks fantastic and the primary new features are as follows: Fresh paint, new flooring and a partition in our main area.

In the next few months, we will be inviting families and regional center social workers to come and visit the newly renovated day program/facility.

We would like to say thank you to the William G. Irwin Charity Foundation for making this project possible. Northern California Adult Services is ready to continue serving the Bay Area's communities with the passion and joy for which our day program is known.



**Thank you William G. Irwin Charity Foundation!**

## LSF Central Coast Adult Services: Expanding Cultural Impact

Central Coast Adults Services has expanded services to those who are Spanish speakers and non-verbal/deaf individuals. Learning the specialized needed skills to work with different cultures and different levels of disabilities assists us in having new perspectives for their individualized plans. We are excited to provide Life Steps services to all families and individuals with different levels of care. These new individuals have come from unstable

situations such as inconsistent services, homelessness, loss of loved ones, lack of resources, communication barriers, and budget and rental issues. Life Steps has been able to guide these individuals on their way to happy, healthy, safe and independent lives in their own homes with stable supportive services.



---

## LSF Southern California Children and Family Services: A Special Success Story

Paris was referred to Life Steps Foundation at 22 months old due to the parents' concerns with her speech and language development. She was exposed to Chinese Mandarin, Shanghai dialect, English and Japanese from home and preschool. The service was provided in Mandarin and English. When we first started our service, she was a shy and quiet girl with limited eye contact. She did not use any words to communicate yet, and she only pointed or made sounds when she needed

help. After receiving Early Intervention Services, Paris learned some sign language such as "more", "all done", "open" and "help". Her eye contact with the Early Interventionist has increased as we had her take part in many interactive play activities. She enjoyed music a lot, so we practiced words and phrases through singing songs. Paris received a lot of praise and encouragement whenever she tried to imitate or say any words, so she eventually became loud and confident. By the end

of the service, Paris was able to name many pictures including animals, colors, shapes and so on. She loved to communicate with us by using gestures and phrases. Additionally, Paris became very verbally expressive, using Mandarin, English and some Japanese. According to her mother, Paris passed the final assessment and did not need to receive further services from the Special Education Service after turning three years old.



# LSF Northern California Children and Family Services

## We Play We Learn: The Start of a New Year

WPWL had a great start to the new year. We had Teacher Ann from the garden visit and bring in banana slugs for the kids to feed and interact with. They enjoyed watching them crawl around and try to escape the pan. We celebrated Valentines Day with a big party and lots of art projects. This included making Valentine bags out of brown paper bags and special Valentines for the parents on a canvas. The kids had so much fun passing out Valentines to their friends. Being able to give their parents the gifts they made for them brought big smiles to everyone. The early part of 2025 has been so much fun, and we are looking forward to our next adventure helping build a new bed in our garden and planting strawberries to harvest in the spring!



# LIFE STEPS FOUNDATION®



## LIFE STEPS PROGRAM LOCATIONS

5757 West Century Boulevard, Suite 880, Los Angeles, CA 90045

### **LSF Children and Family Services Southern California**

Main Program Office  
1930 Brea Canyon Road  
Suite 265  
Diamond Bar, CA 91765  
(562) 699-4991

Program Office  
632 West Avenue  
Suite H-8  
Lancaster, CA 93534  
(661) 266-0756

Program Office  
2500 Pacific Park Drive  
Whittier, CA 90601  
(562) 699-4991

Happy Campers  
14035 Francisquito Avenue  
Baldwin Park, CA 91706  
(626) 338-5090



### **LSF Children and Family Services Northern California**

Main Program Office  
828 C. Mahler Road  
Burlingame, CA 94010  
(650) 777-9182

We Play We Learn  
830 Rosita Road  
Pacifica, CA 94044  
(650) 660-5404

### **LSF Central Coast Adult Services**

218 West Carmen Lane  
Suite 108  
Santa Maria, CA 93458  
(805) 549-0150

### **LSF Northern California Adult Services**

828 C. Mahler Road  
Burlingame, CA 94010  
(650) 259-1808

**LSF SoCal Adult Services**  
500 E. 4th Street  
Long Beach, CA 90802  
(562) 366-7131

Life Steps Foundation was launched in 1983 and has successfully improved the lives of thousands of children and adults diagnosed with delays or developmental disabilities. The purpose of our programs and services is to enhance participants' lives, empower them to achieve life goals, foster self-advocacy, and ensure they can live as independently as possible as adults. We accomplish this by enhancing their abilities and providing aid in the areas of communication, money management, household upkeep, mobility, socialization, and making healthy life choices. In addition, we provide in-home assistance to frail seniors who desire to remain living in their own homes. Please consider joining our Life Steps community with a donation. All donations support our work to brighten the lives of the children, adults, seniors, and families we assist. We accept donations in the form of stocks, bequests, and vehicles. Visit [www.lifesteps.org](http://www.lifesteps.org) and click the 'Donate' button today!

[www.lifestepsfoundation.org](http://www.lifestepsfoundation.org)



DONATE TODAY!



ABOUT LSF

Follow us on:



@lifestepsfoundation



@lifestepsfoundation



@LSFNDN